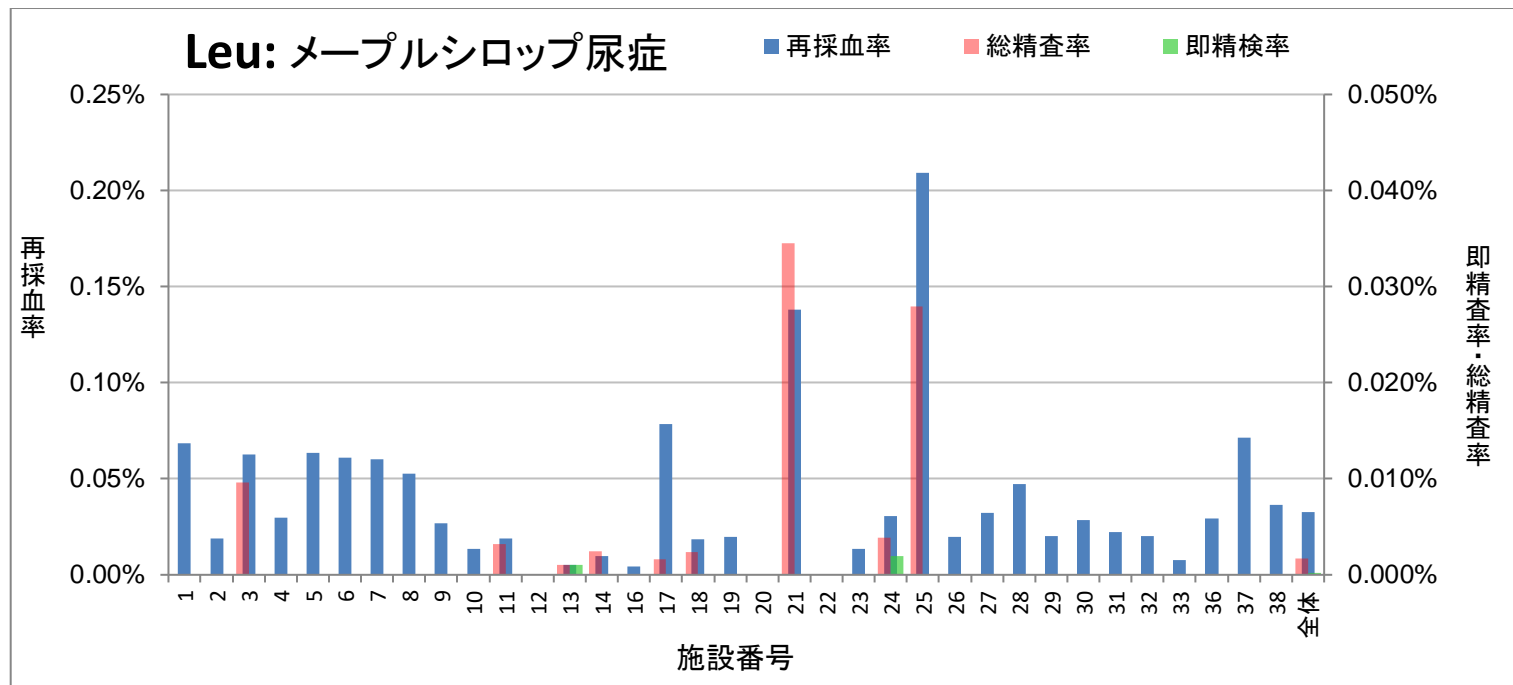
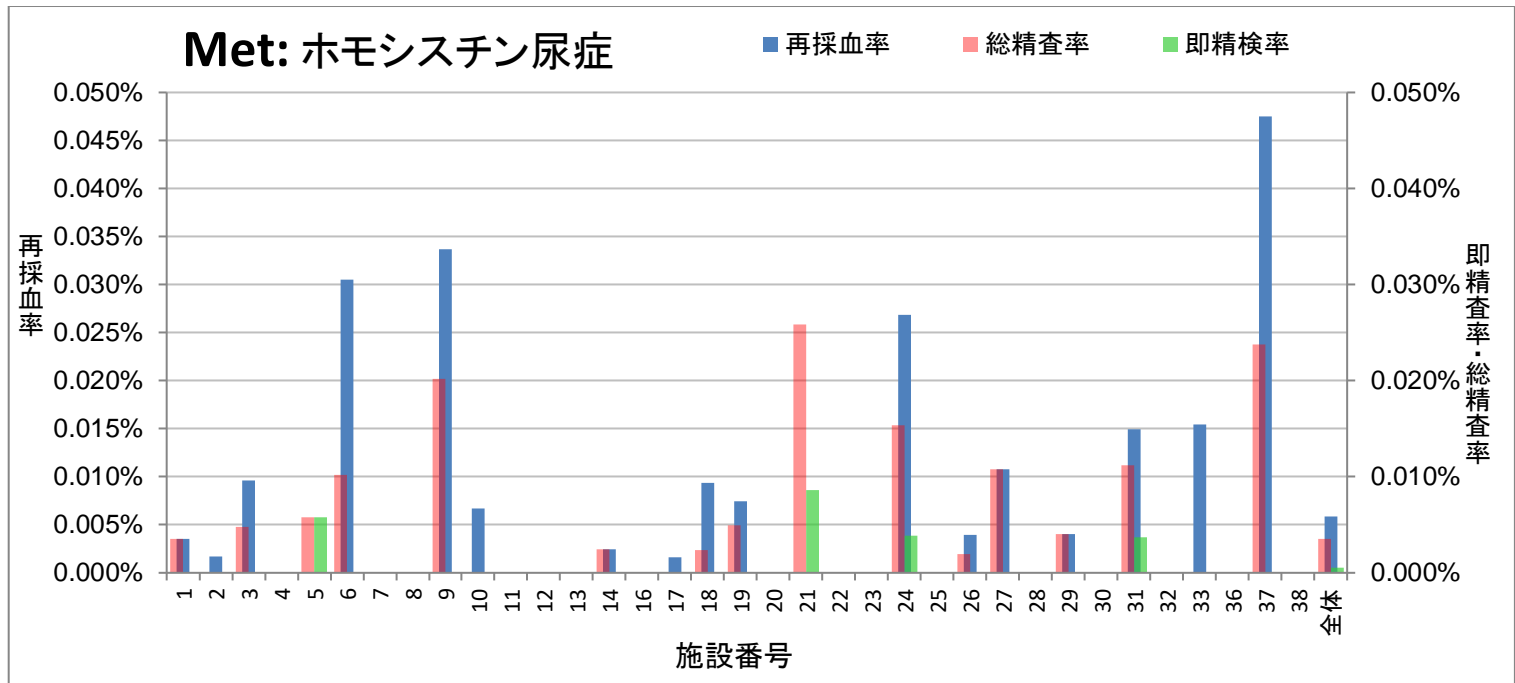


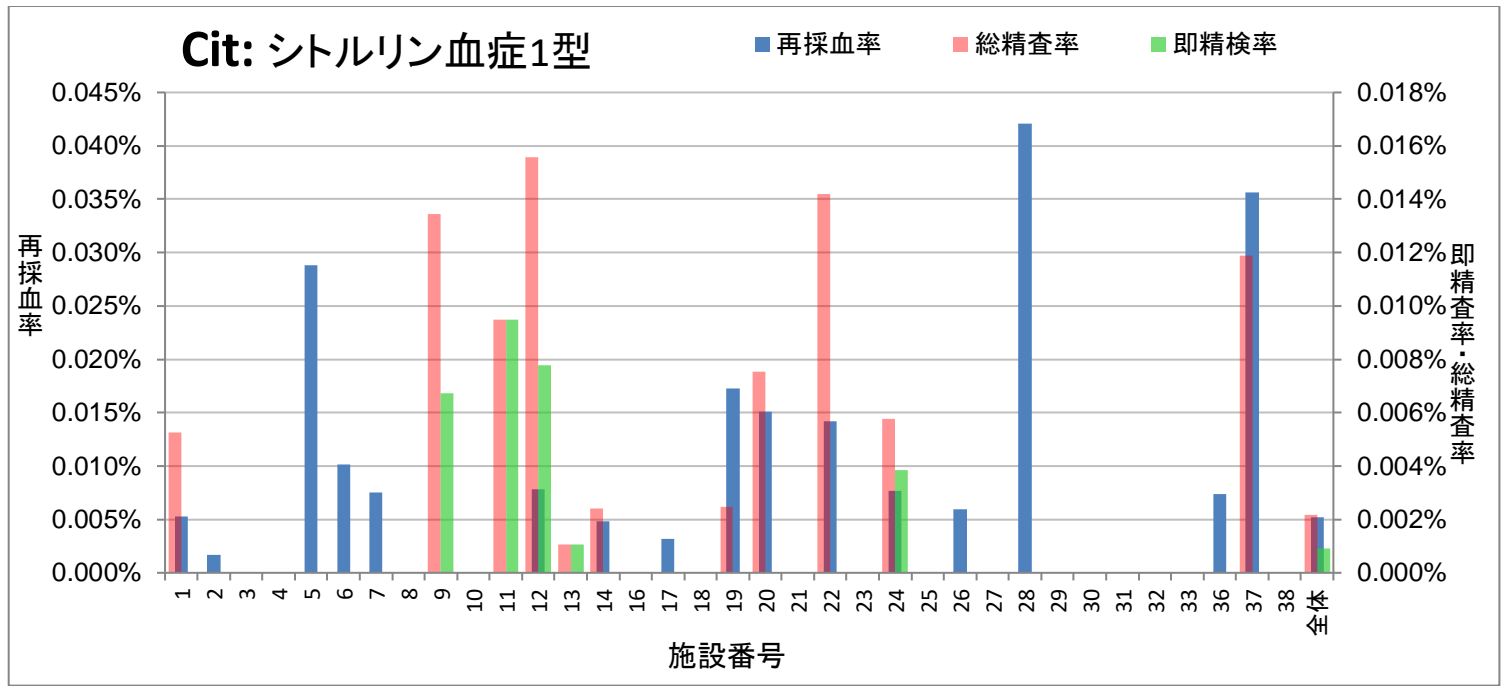
施設 No	検体数	項目	カットオフ値		再採血数	即精査数	再採血後精査数	総精査数	発見患者数	再採血率	即精査率	再採血後精査率	総精査率	発見頻度	陽性適中率 (PPV)	
			初回検査	即精査												
1	57,136	Phe	120.00	600.00	17	1	4	5	3	0.030%	0.002%	0.007%	0.009%	1 : 19,045	60.00%	
2	58,806	Phe	120.00	300.00	22	3	6	9	2	0.037%	0.005%	0.010%	0.015%	1 : 29,403	22.22%	
3	20,761	Phe	120.00	600.00	10	0	7	7	7	0.048%	-	0.034%	0.034%	1 : 2,966	100.00%	
4	6,773	Phe	180.00	600.00	0	1	0	1	1	-	0.015%	-	0.015%	1 : 6,773	100.00%	
5	17,355	Phe	180.00	600.00	3	1	2	3	1	0.017%	0.006%	0.012%	0.017%	1 : 17,355	33.33%	
6	9,830	Phe	110.00		2	0	0	0	0	0.020%	-	-	-	-	-	
7	13,349	Phe	180.00	600.00	0	0	0	0	0	-	-	-	-	-	-	
8	15,155	Phe	181.00	600.00				0	0	-	-	-	-	-	-	
9	14,864	Phe	120.00	300.00	2	0	0	0	0	0.013%	-	-	-	-	-	
10	14,971	Phe	150.00	600.00	0	1	0	1	1	-	0.007%	-	0.007%	1 : 14,971	100.00%	
11	31,669	Phe	180.00	600.00	0	0	0	0	0	-	-	-	-	-	-	
12	12,839	Phe	120.00	480.00				0		-	-	-	-	-	-	
13	93,480	Phe	180.00	360.00	5	2	0	2	0	0.005%	0.002%	-	0.002%	-	0.00%	
14	41,417	Phe	130.00	600.00	0	0	0	0		-	-	-	-	-	-	
16	23,703	Phe	120.00	500.00	2	0	0	0	0	0.008%	-	-	-	-	-	
17	62,545	Phe	180.00		3	0	0	0	0	0.005%	-	-	-	-	-	
18	42,801	Phe	150.00		13	1	2	3	1	0.030%	0.002%	0.005%	0.007%	1 : 42,801	33.33%	
19	40,476	Phe	150.00	600.00	5	1	1	2	1	0.012%	0.002%	0.002%	0.005%	1 : 40,476	50.00%	
20	13,258	Phe	120.00		9	0	4	4	0	0.068%	-	0.030%	0.030%	-	0.00%	
21	11,598	Phe	120.00	600.00	0	0	0	0		-	-	-	-	-	-	
22	7,044	Phe	120.00	600.00	2		1	1	0	0.028%	-	0.014%	0.014%	-	0.00%	
23	14,986	Phe	150.00	600.00	0	2	0	2	2	-	0.013%	-	0.013%	1 : 7,493	100.00%	
24	52,111	Phe	100.00	600.00	22	0	5	5		0.042%	-	0.010%	0.010%	-	0.00%	
25	7,165	Phe	120.00	500.00	4	0	1	1	0	0.056%	-	0.014%	0.014%	-	0.00%	
26	50,628	Phe	120.00		6		2	2	1	0.012%	-	0.004%	0.004%	1 : 50,628	50.00%	
27	9,301	Phe	120.00	600.00	3		1	1	1	0.032%	-	0.011%	0.011%	1 : 9,301	100.00%	
28	19,023	Phe	140.00	242.00	1	0	0	0	0	0.005%	-	-	-	-	-	
29	24,894	Phe	180.00	600.00	2		1	1		0.008%	-	0.004%	0.004%	-	0.00%	
30	10,548	Phe	120.00	500.00	1	0	0	0		0.009%	-	-	-	-	-	
31	26,824	Phe	120.00		5	1	2	3	2	0.019%	0.004%	0.007%	0.011%	1 : 13,412	66.67%	
32	4,925	Phe	150.00	600.00	0	0	0	0	0	-	-	-	-	-	-	
33	12,985	Phe	120.00	400.00	0			0		-	-	-	-	-	-	
36	13,604	Phe	180.00	600.00	3	0	0	0	0	0.022%	-	-	-	-	-	
37	8,416	Phe	120.00		2	0	1	1	0	0.024%	-	0.012%	0.012%	-	0.00%	
38	5,499	Phe	130.00		1			0	0	0.018%	-	-	-	-	-	
全体	870,739	Phe	140.03	532.67	145	14	40	54	23	0.017%	0.002%	0.005%	0.006%	1 : 37,858	42.59%	
										max	0.068%	0.015%	0.034%	0.034%		100.00%
										min	0.005%	0.002%	0.002%	0.002%		0.00%



施設 No	検体数	項目	カットオフ値		再採血数	即精検数	再採血後精検数	総精検数	発見患者	再採血率	即精検率	再採血後精検率	総精査率	発見頻度	陽性適中率 (PPV)
			初回検査	即精査											
1	57,136	Leu+Ile	350.00	600.00	39	0	0	0	0	0.068%	-	-	-	-	-
2	58,806	Leu+Ile	350.00	600.00	11	0	0	0	0	0.019%	-	-	-	-	-
3	20,761	Leu+Ile	350.00	600.00	13	0	2	2	0	0.063%	-	0.010%	0.010%	-	0.00%
4	6,773	Leu+Ile	350.00	600.00	2	0	0	0	0	0.030%	-	-	-	-	-
5	17,355	Leu+Ile	350.00	600.00	11	0	0	0	0	0.063%	-	-	-	-	-
6	9,830	Leu+Ile	&310	600.00	6	0	0	0	0	0.061%	-	-	-	-	-
7	13,349	Leu+Ile	350.00	600.00	8	0	0	0	0	0.060%	-	-	-	-	-
8	15,155	Leu+Ile	305.00	600.00	8			0	0	0.053%	-	-	-	-	-
9	14,864	Leu+Ile	350.00	700.00	4	0	0	0	0	0.027%	-	-	-	-	-
10	14,971	Leu+Ile	360.00	600.00	2	0	0	0	0	0.013%	-	-	-	-	-
11	31,669	Leu+Ile	350.00	600.00	6	0	1	1	0	0.019%	-	0.003%	0.003%	-	0.00%
12	12,839	Leu+Ile	350.00	600.00				0							
13	93,480	Leu+Ile	350.00	458.00	5	1	0	1	1	0.005%	0.001%	-	0.001%	1 : 93,480	100.00%
14	41,417	Leu+Ile	350.00	600.00	4	0	1	1	0	0.010%	-	0.002%	0.002%	-	0.00%
16	23,703	Leu+Ile	350.00	600.00	1	0	0	0	0	0.004%	-	-	-	-	-
17	62,545	Leu+Ile	350.00		49	0	1	1	0	0.078%	-	0.002%	0.002%	-	0.00%
18	42,801	Leu+Ile	350.00		8	0	1	1	0	0.019%	-	0.002%	0.002%	-	0.00%
19	40,476	Leu+Ile	350.00	600.00	8			0	0	0.020%	-	-	-	-	-
20	13,258	Leu+Ile	350.00		0	0	0	0	0	-	-	-	-	-	-
21	11,598	Leu+Ile	280.00	600.00	16	0	4	4	0	0.138%	-	0.034%	0.034%	-	0.00%
22	7,044	Leu+Ile	350.00	600.00				0							
23	14,986	Leu+Ile	360.00	478.00	2	0	0	0	0	0.013%	-	-	-	-	-
24	52,111	Leu+Ile	350.00	600.00	16	1	1	2	2	0.031%	0.002%	0.002%	0.004%	-	0.00%
25	7,165	Leu+Ile	315.00	600.00	15	0	2	2	0	0.209%	-	0.028%	0.028%	-	0.00%
26	50,628	Leu+Ile	350.00		10		0	0	0	0.020%	-	-	-	-	-
27	9,301	Leu+Ile	360.00	600.00	3		0	0	0	0.032%	-	-	-	-	-
28	19,023	Leu+Ile	360.00	600.00	9	0	0	0	0	0.047%	-	-	-	-	-
29	24,894	Leu+Ile	350.00	600.00	5			0	0	0.020%	-	-	-	-	-
30	10,548	Leu+Ile	350.00	600.00	3	0	0	0	0	0.028%	-	-	-	-	-
31	26,824	Leu+Ile	350.00		6	0	0	0	0	0.022%	-	-	-	-	-
32	4,925	Leu+Ile	360.00	600.00	1	0	0	0	0	0.020%	-	-	-	-	-
33	12,985	Leu+Ile	350.00	600.00	1			0	0	0.008%	-	-	-	-	-
36	13,604	Leu+Ile	350.00	600.00	4	0	0	0	0	0.029%	-	-	-	-	-
37	8,416	Leu+Ile	350.00		6	0	0	0	0	0.071%	-	-	-	-	-
38	5,499	Leu+Ile	350.00		2			0	0	0.036%	-	-	-	-	-
全体	870,739	Leu+Ile	347.06	593.93	284	2	13	15	1	0.033%	0.000%	0.001%	0.002%	1 : 870,739	6.67%
									max	0.209%	0.002%	0.034%	0.034%		100.00%
									min	0.004%	0.001%	0.002%	0.001%		0.00%



施設 No	検体数	項目	カットオフ値		再採血数	即精査数	再採血後精査数	総精査数	発見患者	再採血率	即精査率	再採血後精査率	総精査率	発見頻度	陽性適中率 (PPV)
			初回検査	即精査											
1	57,136	Met	70.00	100.00	2	0	2	2	0	0.004%	-	0.004%	0.004%	-	0.00%
2	58,806	Met	70.00	240.00	1	0	0	0	0	0.002%	-	-	-	-	0.00%
3	20,761	Met	70.00	100.00	2	0	1	1	0	0.010%	-	0.005%	0.005%	-	0.00%
4	6,773	Met	80.00	-	0	0	0	0	0	-	-	-	-	-	0.00%
5	17,355	Met	80.00	100.00	0	1	0	1	0	-	0.006%	-	0.006%	-	0.00%
6	9,830	Met	50.00	-	3	0	1	1	0	0.031%	-	0.010%	0.010%	-	0.00%
7	13,349	Met	80.00	-	0	0	0	0	0	-	-	-	-	-	0.00%
8	15,155	Met	67.00	-	-	-	-	0	0	-	-	-	-	-	0.00%
9	14,864	Met	50.00	100.00	5	0	3	3	0	0.034%	-	0.020%	0.020%	-	0.00%
10	14,971	Met	60.00	-	1	0	0	0	0	0.007%	-	-	-	-	0.00%
11	31,669	Met	80.00	-	0	0	0	0	0	-	-	-	-	-	0.00%
12	12,839	Met	67.00	-	-	-	-	0	0	-	-	-	-	-	0.00%
13	93,480	Met	100.00	268.00	0	0	0	0	0	-	-	-	-	-	0.00%
14	41,417	Met	80.00	-	1	0	1	1	0	0.002%	-	0.002%	0.002%	-	0.00%
16	23,703	Met	70.00	340.00	0	0	0	0	0	-	-	-	-	-	0.00%
17	62,545	Met	70.00	-	1	0	0	0	0	0.002%	-	-	-	-	0.00%
18	42,801	Met	80.00	-	4	0	1	1	0	0.009%	-	0.002%	0.002%	-	0.00%
19	40,476	Met	70.00	-	3	-	2	2	0	0.007%	-	0.005%	0.005%	-	0.00%
20	13,258	Met	80.00	-	0	0	0	0	0	-	-	-	-	-	0.00%
21	11,598	Met	50.00	100.00	0	1	2	3	0	-	0.009%	0.017%	0.026%	-	0.00%
22	7,044	Met	67.00	100.00	-	-	-	0	0	-	-	-	-	-	0.00%
23	14,986	Met	60.00	-	0	0	0	0	0	-	-	-	-	-	0.00%
24	52,111	Met	50.00	-	14	2	6	8	0	0.027%	0.004%	0.012%	0.015%	-	0.00%
25	7,165	Met	67.00	340.00	0	0	0	0	0	-	-	-	-	-	0.00%
26	50,628	Met	70.00	-	2	-	1	1	0	0.004%	-	0.002%	0.002%	-	0.00%
27	9,301	Met	60.00	-	1	-	1	1	0	0.011%	-	0.011%	0.011%	-	0.00%
28	19,023	Met	60.00	134.00	0	0	0	0	0	-	-	-	-	-	0.00%
29	24,894	Met	80.00	-	1	-	1	1	0	0.004%	-	0.004%	0.004%	-	0.00%
30	10,548	Met	70.00	100.00	0	0	0	0	0	-	-	-	-	-	0.00%
31	26,824	Met	70.00	-	4	1	2	3	2	0.015%	0.004%	0.007%	0.011%	1 : 13,412	66.67%
32	4,925	Met	60.00	-	0	0	0	0	0	-	-	-	-	-	0.00%
33	12,985	Met	50.00	-	2	-	-	0	0	0.015%	-	-	-	-	0.00%
36	13,604	Met	80.00	-	0	0	0	0	0	-	-	-	-	-	0.00%
37	8,416	Met	60.00	-	4	0	2	2	0	0.048%	-	0.024%	0.024%	-	0.00%
38	5,499	Met	80.00	-	-	-	-	0	0	-	-	-	-	-	0.00%
全体	870,739	Met	68.80	168.50	51	5	26	31	2	0.006%	0.001%	0.003%	0.004%	1 : 435,370	6.45%
										max	0.048%	0.009%	0.024%	0.026%	66.67%
										min	0.002%	0.004%	0.002%	0.002%	0.00%

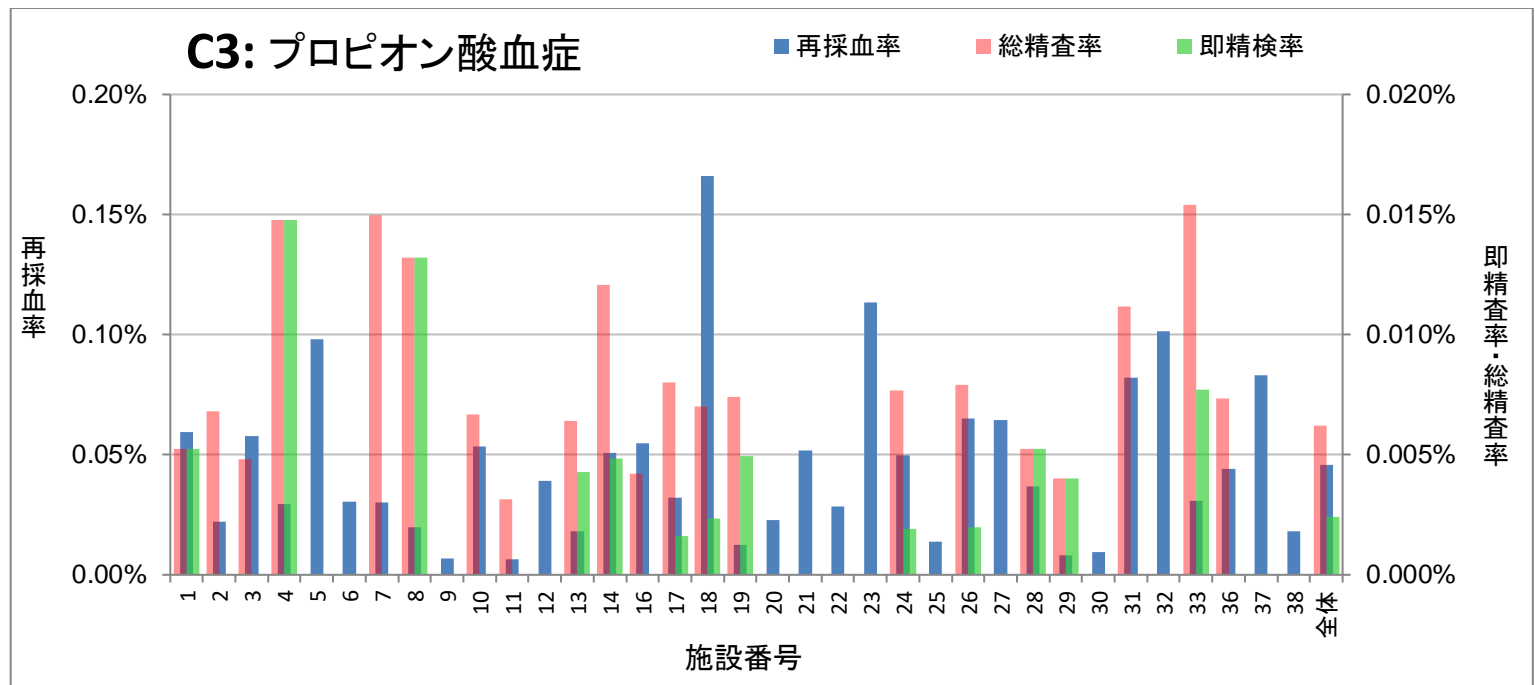


施設 No	検体数	項目	カットオフ値		再採血数	即精査数	再採血後精査数	総精査数	発見患者	再採血率	即精査率	再採血後精査率	総精査率	発見頻度	陽性適中率 (PPV)
			初回検査	即精査											
1	57,136	Cit	70.00	300.00	3	0	3	3	0	0.005%	-	0.005%	0.005%	-	0.00%
2	58,806	Cit	80.00	300.00	1	0	0	0	0	0.002%	-	-	-	-	-
3	20,761	Cit	80.00	200.00	0	0	0	0	0	-	-	-	-	-	-
4	6,773	Cit	90.00	270.00	0	0	0	0	0	-	-	-	-	-	-
5	17,355	Cit	100.00	300.00	5	0	0	0	0	0.029%	-	-	-	-	-
6	9,830	Cit	50.00	250.00	1	0	0	0	0	0.010%	-	-	-	-	-
7	13,349	Cit	100.00	300.00	1	0	0	0	0	0.007%	-	-	-	-	-
8	15,155	Cit	68.00	300.00				0	0	-	-	-	-	-	-
9	14,864	Cit/AA ※1	0.025	※2	0	1	1	2	0	-	0.007%	0.007%	0.013%	-	0.00%
10	14,971	Cit	85.00	300.00	0	0	0	0	0	-	-	-	-	-	-
11	31,669	Cit		80.00	0	3	0	3	0	-	0.009%	-	0.009%	-	0.00%
12	12,839	Cit	55.00	80.00	1	1	1	2	0	0.008%	0.008%	0.008%	0.016%	-	0.00%
13	93,480	Cit	100.00	200.00	0	1	0	1	1	-	0.001%	-	0.001%	1 : 93,480	100.00%
14	41,417	Cit	80.00	300.00	2	0	1	1	0	0.005%	-	0.002%	0.002%	-	0.00%
16	23,703	Cit	80.00	300.00	0	0	0	0	0	-	-	-	-	-	-
17	62,545	Cit	50.25	300.00	2			0	0	0.003%	-	-	-	-	-
18	42,801	Cit	100.00		0	0	0	0	0	-	-	-	-	-	-
19	40,476	Cit	80.00	140.00	7		1	1	0	0.017%	-	0.002%	0.002%	-	0.00%
20	13,258	Cit	100.00		2	0	1	1	0	0.015%	-	0.008%	0.008%	-	0.00%
21	11,598	Cit	40.00	300.00	0	0	0	0	0	-	-	-	-	-	-
22	7,044	Cit	65.00	300.00	1		1	1	0	0.014%	-	0.014%	0.014%	-	0.00%
23	14,986	Cit	85.00	300.00	0	0	0	0	0	-	-	-	-	-	-
24	52,111	Cit	100.00	300.00	4	2	1	3	0	0.008%	0.004%	0.002%	0.006%	-	0.00%
25	7,165	Cit	100.00	250.00	0	0	0	0	0	-	-	-	-	-	-
26	50,628	Cit	60.00	300.00	3			0	0	0.006%	-	-	-	-	-
27	9,301	Cit	85.00	300.00				0	0	-	-	-	-	-	-
28	19,023	Cit	65.00	300.00	8	0	0	0	0	0.042%	-	-	-	-	-
29	24,894	Cit	100.00	300.00	0			0	0	-	-	-	-	-	-
30	10,548	Cit	100.00	300.00	0	0	0	0	0	-	-	-	-	-	-
31	26,824	Cit	60.00	300.00	0	0	0	0	0	-	-	-	-	-	-
32	4,925	Cit	85.00	300.00	0	0	0	0	0	-	-	-	-	-	-
33	12,985	Cit	60.00	180.00	0			0	0	-	-	-	-	-	-
36	13,604	Cit	100.00	300.00	1	0	0	0	0	0.007%	-	-	-	-	-
37	8,416	Cit	85.00		3	0	1	1	1	0.036%	-	0.012%	0.012%	1 : 8,416	100.00%
38	5,499	Cit	100.00	250.00				0	0	-	-	-	-	-	-
全体	870,739	Cit	80.55	264.52	45	8	11	19	2	0.005%	0.001%	0.001%	0.002%	1 : 435,370	10.53%
									max	0.042%	0.009%	0.014%	0.016%		100.00%
									min	0.002%	0.001%	0.002%	0.001%		0.00%

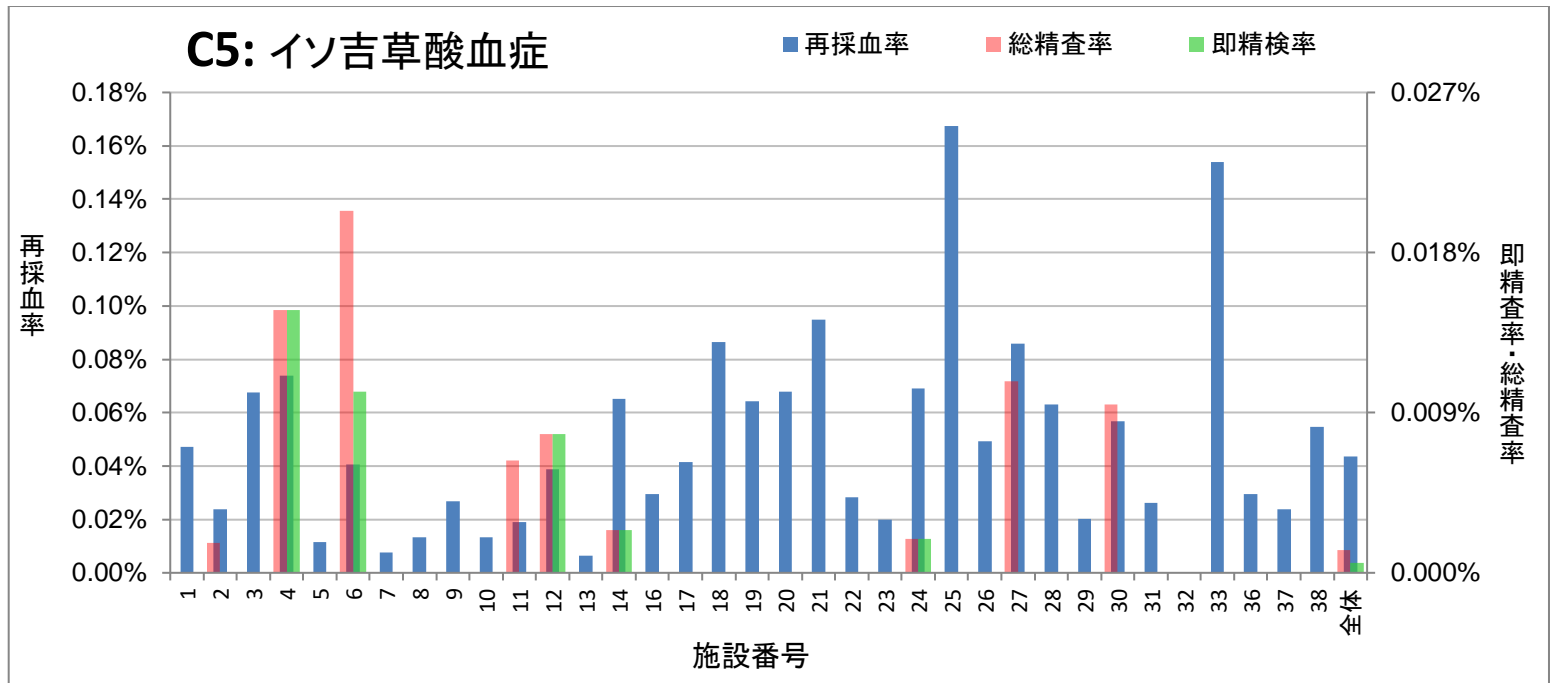
※1 Cit/AAはシトルリン濃度とアミノ酸濃度合計の比を示す。

AA(アミノ酸濃度合計); Gly, Ala, Val, Leu, Phe, Tyr, Asp, Glu, ASA, Orn, Met, Arg, Citの合計

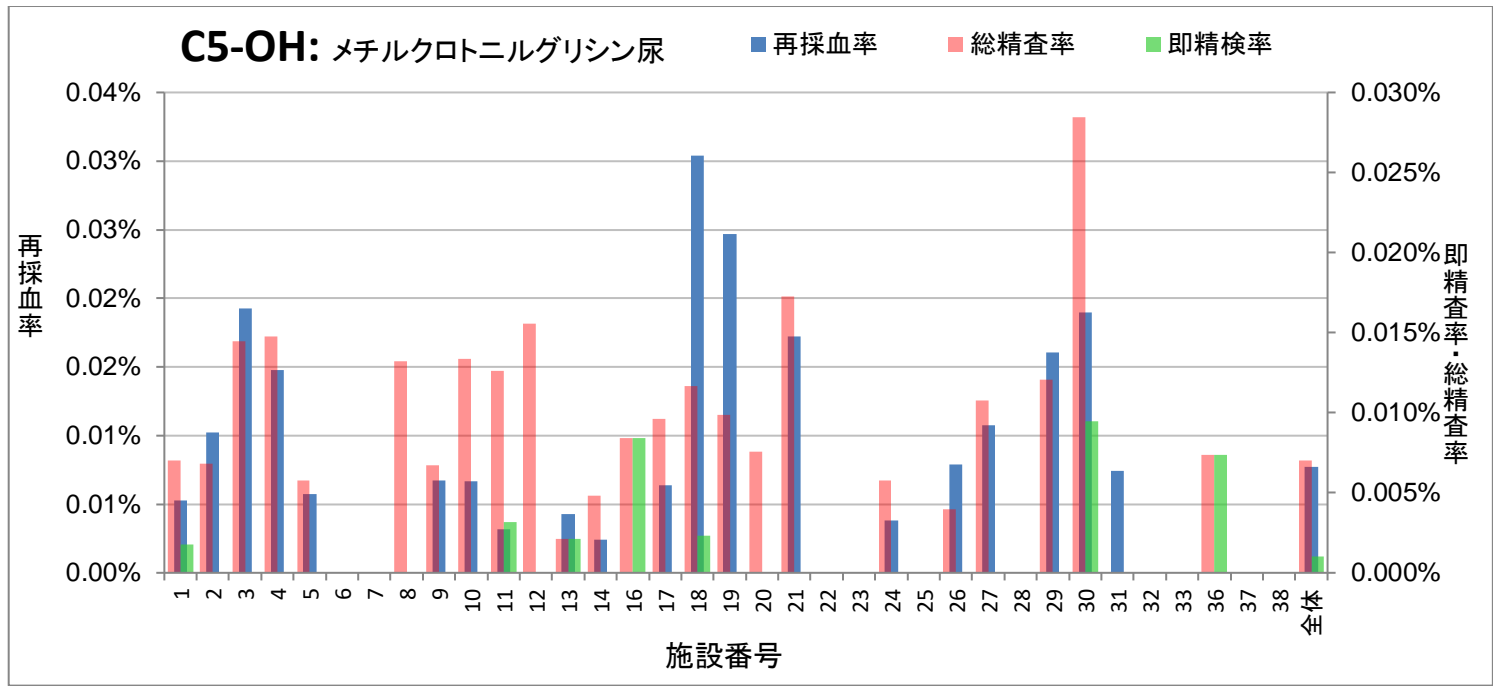
※2 Cit>100



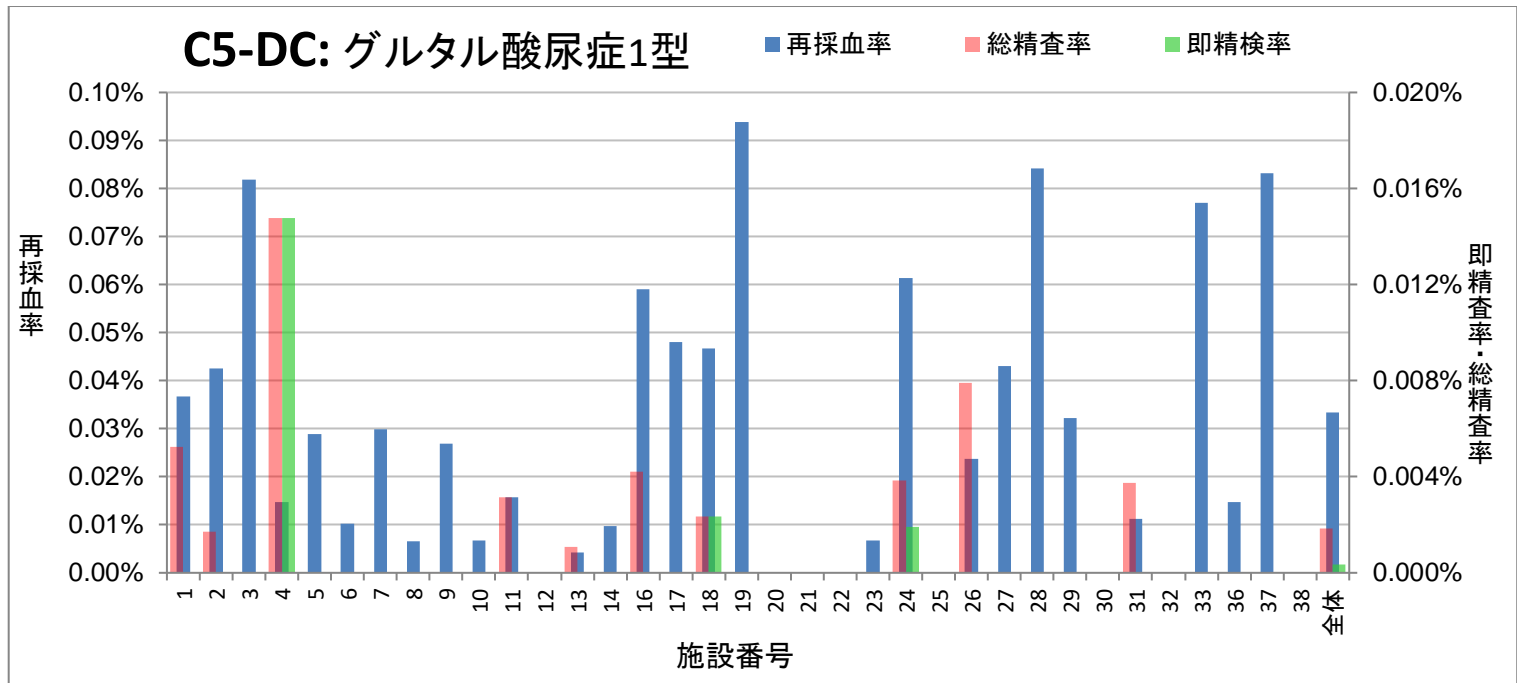
施設No	検体数	項目	カットオフ値		再採血数	即精検数	再採血後精検数	総精検数	発見患者	再採血率	即精検率	再採血後精検率	総精査率	発見頻度	陽性適中率 (PPV)
			初回検査	即精査											
1	57,136	C3	4.00	8.00	34	3	0	3	0	0.060%	0.005%	-	0.005%	-	0.00%
2	58,806	C3	4.00	8.00	13	0	4	4	2	0.022%	-	0.007%	0.007%	1 : 29,403	50.00%
3	20,761	C3	3.60	8.00	12	0	1	1	1	0.058%	-	0.005%	0.005%	1 : 20,761	100.00%
4	6,773	C3	3.50	7.60	2	1	0	1	0	0.030%	0.015%	-	0.015%	-	0.00%
5	17,355	C3	3.60	8.00	17	0	0	0	0	0.098%	-	-	-	-	-
6	9,830	C3	&3.60	8.00	3	0	0	0	0	0.031%	-	-	-	-	-
7	13,349	C3	3.60	8.00	4	0	2	2	1	0.030%	-	0.015%	0.015%	1 : 13,349	50.00%
8	15,155	C3	3.60	8.00	3	2		2	1	0.020%	0.013%	-	0.013%	1 : 15,155	50.00%
9	14,864	C3	4.00		1	0	0	0	0	0.007%	-	-	-	-	-
10	14,971	C3	3.60	8.00	8	0	1	1	0	0.053%	-	0.007%	0.007%	-	0.00%
11	31,669	C3	3.60	8.00	2	0	1	1	1	0.006%	-	0.003%	0.003%	1 : 31,669	100.00%
12	12,839	C3	3.60	8.00	5			0		0.039%	-	-	-	-	-
13	93,480	C3	3.60	8.00	17	4	2	6	2	0.018%	0.004%	0.002%	0.006%	1 : 46,740	33.33%
14	41,417	C3	4.00	8.00	21	2	3	5	2	0.051%	0.005%	0.007%	0.012%	1 : 20,709	40.00%
16	23,703	C3	4.00	8.00	13	0	1	1	0	0.055%	-	0.004%	0.004%	-	0.00%
17	62,545	C3	3.50	8.00	20	1	4	5		0.032%	0.002%	0.006%	0.008%	-	0.00%
18	42,801	C3	3.50		71	1	2	3	1	0.166%	0.002%	0.005%	0.007%	1 : 42,801	33.33%
19	40,476	C3	3.60	8.00	5	2	1	3		0.012%	0.005%	0.002%	0.007%	-	0.00%
20	13,258	C3	3.50		3	0	0	0	0	0.023%	-	-	-	-	-
21	11,598	C3	3.80	8.00	6	0	0	0		0.052%	-	-	-	-	-
22	7,044	C3	3.50	8.00	2			0		0.028%	-	-	-	-	-
23	14,986	C3	4.20	8.00	17	0	0	0	0	0.113%	-	-	-	-	-
24	52,111	C3	3.60	8.00	26	1	3	4		0.050%	0.002%	0.006%	0.008%	-	0.00%
25	7,165	C3	3.90	8.00	1	0	0	0	0	0.014%	-	-	-	-	-
26	50,628	C3	3.60	8.00	33	1	3	4	1	0.065%	0.002%	0.006%	0.008%	1 : 50,628	25.00%
27	9,301	C3	4.00	8.00	6			0		0.065%	-	-	-	-	-
28	19,023	C3	3.60	8.00	7	1	0	1	1	0.037%	0.005%	-	0.005%	1 : 19,023	100.00%
29	24,894	C3	3.60	8.00	2	1		1		0.008%	0.004%	-	0.004%	-	0.00%
30	10,548	C3	3.50	8.00	1	0	0	0		0.009%	-	-	-	-	-
31	26,824	C3	3.60	8.00	22	0	3	3	0	0.082%	-	0.011%	0.011%	-	0.00%
32	4,925	C3	3.50	8.00	5	0	0	0	0	0.102%	-	-	-	-	-
33	12,985	C3	4.00	10.00	4	1	1	2	0	0.031%	0.008%	0.008%	0.015%	-	0.00%
36	13,604	C3	3.60	8.00	6	0	1	1	0	0.044%	-	0.007%	0.007%	-	0.00%
37	8,416	C3	3.60		7	0	0	0	0	0.083%	-	-	-	-	-
38	5,499	C3	3.60	7.50	1			0	0	0.018%	-	-	-	-	-
全体	870,739	C3	3.69	8.04	400	21	33	54	13	0.046%	0.002%	0.004%	0.006%	1 : 66,980	24.07%
									max	0.166%	0.015%	0.015%	0.015%		100.00%
									min	0.006%	0.002%	0.002%	0.003%		0.00%



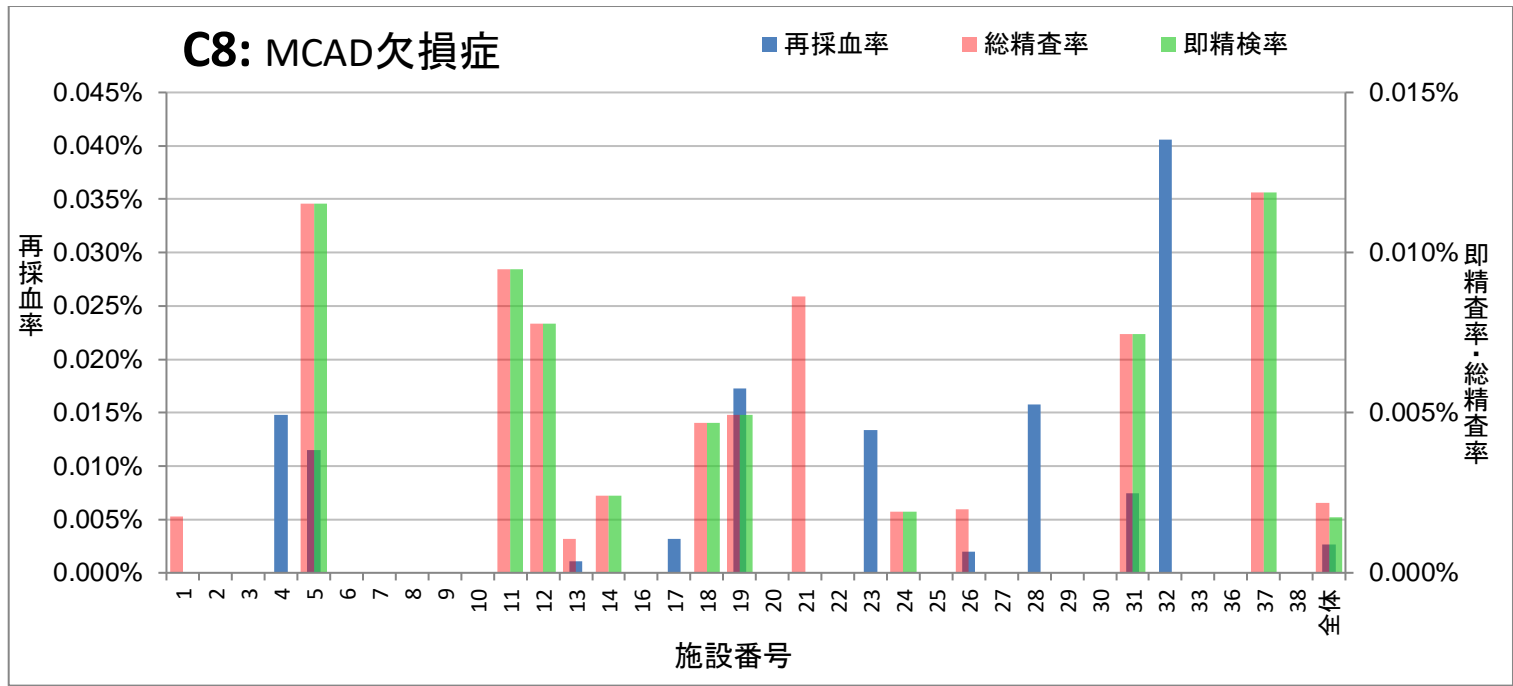
施設 No	検体数	項目	カットオフ値		再採血数	即精検数	再採血後精検数	総精検数	発見患者	再採血率	即精検率	再採血後精検率	総精査率	発見頻度	陽性適中率 (PPV)
			初回検査	即精査											
1	57,136	C5	1.00	5.00	27	0	0	0	0	0.047%	-	-	-	-	-
2	58,806	C5	1.00	5.00	14	0	1	1	0	0.024%	-	0.002%	0.002%	-	0.00%
3	20,761	C5	1.00	4.00	14	0	0	0	0	0.067%	-	-	-	-	-
4	6,773	C5	1.00	5.00	5	1	0	1	0	0.074%	0.015%	-	0.015%	-	0.00%
5	17,355	C5	1.00	5.00	2	0	0	0	0	0.012%	-	-	-	-	-
6	9,830	C5	1.00	5.00	4	1	1	2	0	0.041%	0.010%	0.010%	0.020%	-	0.00%
7	13,349	C5	1.00	5.00	1	0	0	0	0	0.007%	-	-	-	-	-
8	15,155	C5	1.00	5.00	2	0	0	0	0	0.013%	-	-	-	-	-
9	14,864	C5	1.00	2.00	4	0	0	0	0	0.027%	-	-	-	-	-
10	14,971	C5	1.00	5.00	2	0	0	0	0	0.013%	-	-	-	-	-
11	31,669	C5	1.00	5.00	6	0	2	2	0	0.019%	-	0.006%	0.006%	-	0.00%
12	12,839	C5	1.00	5.00	5	1	0	1	1	0.039%	0.008%	-	0.008%	1 : 12,839	100.00%
13	93,480	C5	1.00	5.00	6	0	0	0	0	0.006%	-	-	-	-	-
14	41,417	C5	1.00	5.00	27	1	0	1	1	0.065%	0.002%	-	0.002%	1 : 41,417	100.00%
16	23,703	C5	1.00	5.00	7	0	0	0	0	0.030%	-	-	-	-	-
17	62,545	C5	1.00	5.00	26	0	0	0	0	0.042%	-	-	-	-	-
18	42,801	C5	1.00	5.00	37	0	0	0	0	0.086%	-	-	-	-	-
19	40,476	C5	1.00	5.00	26	0	0	0	0	0.064%	-	-	-	-	-
20	13,258	C5	1.00	5.00	9	0	0	0	0	0.068%	-	-	-	-	-
21	11,598	C5	0.80	5.00	11	0	0	0	0	0.095%	-	-	-	-	-
22	7,044	C5	1.00	5.00	2	0	0	0	0	0.028%	-	-	-	-	-
23	14,986	C5	1.00	5.00	3	0	0	0	0	0.020%	-	-	-	-	-
24	52,111	C5	1.00	5.00	36	1	0	1	1	0.069%	0.002%	-	0.002%	-	0.00%
25	7,165	C5	1.00	5.00	12	0	0	0	0	0.167%	-	-	-	-	-
26	50,628	C5	1.00	5.00	25	0	0	0	0	0.049%	-	-	-	-	-
27	9,301	C5	0.90	5.00	8	0	1	1	1	0.086%	-	0.011%	0.011%	-	0.00%
28	19,023	C5	1.00	5.00	12	0	0	0	0	0.063%	-	-	-	-	-
29	24,894	C5	1.00	5.00	5	0	0	0	0	0.020%	-	-	-	-	-
30	10,548	C5	1.00	5.00	6	0	1	1	1	0.057%	-	0.009%	0.009%	-	0.00%
31	26,824	C5	1.00	5.00	7	0	0	0	0	0.026%	-	-	-	-	-
32	4,925	C5	1.00	5.00	0	0	0	0	0	-	-	-	-	-	-
33	12,985	C5	1.00	5.00	20	0	0	0	0	0.154%	-	-	-	-	-
36	13,604	C5	1.00	5.00	4	0	0	0	0	0.029%	-	-	-	-	-
37	8,416	C5	1.00	5.00	2	0	0	0	0	0.024%	-	-	-	-	-
38	5,499	C5	1.00	3.60	3	0	0	0	0	0.055%	-	-	-	-	-
全体	870,739	C5	0.99	4.83	380	5	6	11	2	0.044%	0.001%	0.001%	0.001%	1 : 435,370	18.18%
									max	0.167%	0.015%	0.011%	0.020%		100.00%
									min	0.006%	0.002%	0.002%	0.002%		0.00%



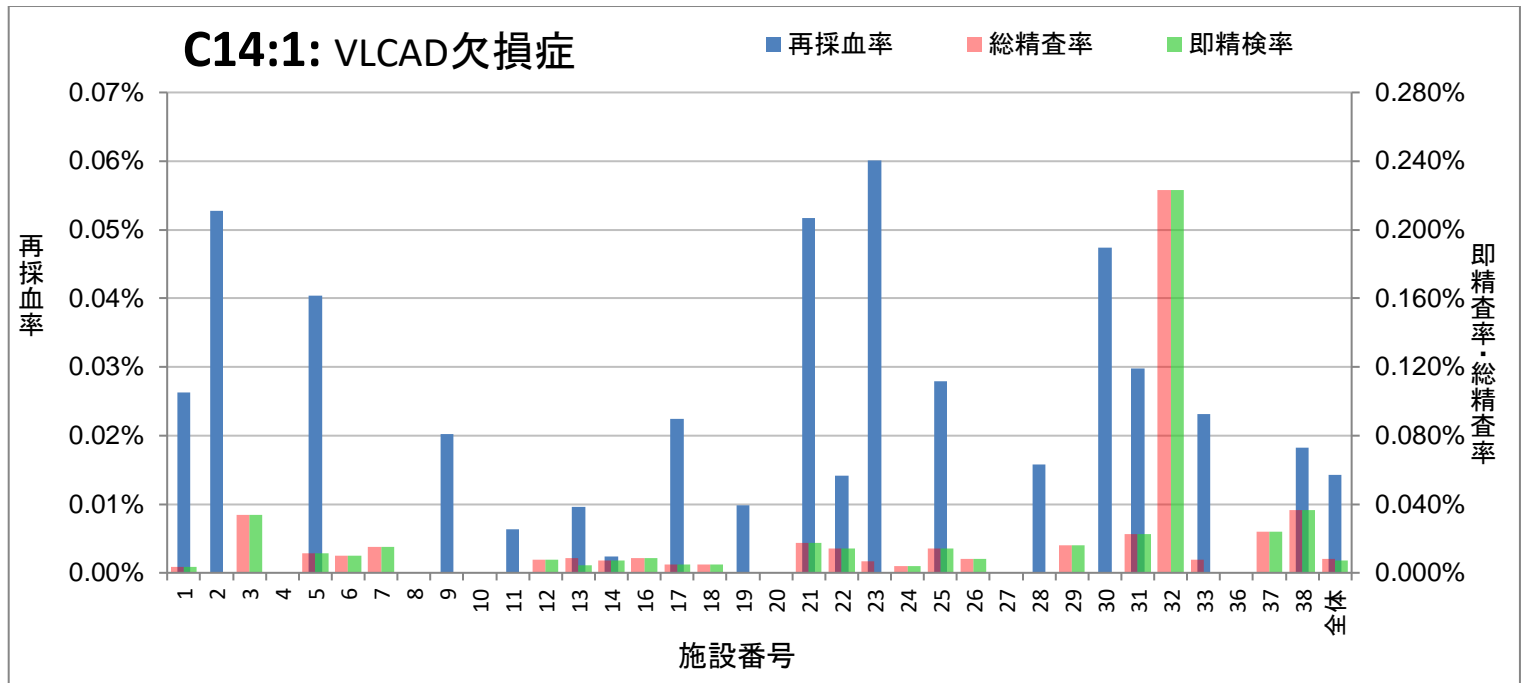
施設 No	検体数	項目	カットオフ値		再採血数	即精査数	再採血後精査数	総精査数	発見患者	再採血率	即精査率	再採血後精査率	総精査率	発見頻度	陽性適中率 (PPV)
			初回検査	即精査											
1	57,136	C5-OH	1.00	2.00	3	1	3	4	2	0.005%	0.002%	0.005%	0.007%	1:28,568	50.00%
2	58,806	C5-OH	1.00	2.00	6	0	4	4	0	0.010%	-	0.007%	0.007%	-	0.00%
3	20,761	C5-OH	1.00	2.00	4	0	3	3	0	0.019%	-	0.014%	0.014%	-	0.00%
4	6,773	C5-OH	1.00	2.00	1	0	1	1	0	0.015%	-	0.015%	0.015%	-	0.00%
5	17,355	C5-OH	1.00	2.00	1	0	1	1	0	0.006%	-	0.006%	0.006%	-	0.00%
6	9,830	C5-OH	1.00	2.00	0	0	0	0	0	-	-	-	-	-	-
7	13,349	C5-OH	1.00	2.00	0	0	0	0	0	-	-	-	-	-	-
8	15,155	C5-OH	1.00	2.00	0	0	2	2	0	-	-	0.013%	0.013%	-	0.00%
9	14,864	C5-OH	1.00	2.00	1	0	1	1	0	0.007%	-	0.007%	0.007%	-	0.00%
10	14,971	C5-OH	1.00	2.00	1	0	2	2	0	0.007%	-	0.013%	0.013%	-	0.00%
11	31,669	C5-OH	1.00	2.00	1	1	3	4	0	0.003%	0.003%	0.009%	0.013%	-	0.00%
12	12,839	C5-OH	1.00	2.00	0	0	2	2	0	-	-	0.016%	0.016%	-	0.00%
13	93,480	C5-OH	1.00	2.00	4	2	0	2	1	0.004%	0.002%	-	0.002%	1:93,480	50.00%
14	41,417	C5-OH	1.00	2.00	1	0	2	2	0	0.002%	-	0.005%	0.005%	-	0.00%
16	23,703	C5-OH	1.00	2.00	0	2	0	2	1	-	0.008%	-	0.008%	1:23,703	50.00%
17	62,545	C5-OH	1.00	2.00	4	0	6	6	0	0.006%	-	0.010%	0.010%	-	0.00%
18	42,801	C5-OH	1.00	2.00	13	1	4	5	0	0.030%	0.002%	0.009%	0.012%	-	0.00%
19	40,476	C5-OH	1.00	2.00	10	0	4	4	0	0.025%	-	0.010%	0.010%	-	0.00%
20	13,258	C5-OH	1.00	2.00	0	0	1	1	0	-	-	0.008%	0.008%	-	0.00%
21	11,598	C5-OH	0.80	2.00	2	0	2	2	0	0.017%	-	0.017%	0.017%	-	0.00%
22	7,044	C5-OH	1.00	2.00	0	0	0	0	0	-	-	-	-	-	-
23	14,986	C5-OH	1.00	2.00	0	0	0	0	0	-	-	-	-	-	-
24	52,111	C5-OH	1.00	2.00	2	0	3	3	0	0.004%	-	0.006%	0.006%	-	0.00%
25	7,165	C5-OH	1.00	2.00	0	0	0	0	0	-	-	-	-	-	-
26	50,628	C5-OH	1.00	2.00	4	0	2	2	0	0.008%	-	0.004%	0.004%	-	0.00%
27	9,301	C5-OH	0.90	2.00	1	0	1	1	0	0.011%	-	0.011%	0.011%	-	0.00%
28	19,023	C5-OH	1.00	2.00	0	0	0	0	0	-	-	-	-	-	-
29	24,894	C5-OH	1.00	2.00	4	0	3	3	0	0.016%	-	0.012%	0.012%	-	0.00%
30	10,548	C5-OH	1.00	2.00	2	1	2	3	1	0.019%	0.009%	0.019%	0.028%	1:10,548	33.33%
31	26,824	C5-OH	1.00	2.00	2	0	0	0	0	0.007%	-	-	-	-	-
32	4,925	C5-OH	1.00	2.00	0	0	0	0	0	-	-	-	-	-	-
33	12,985	C5-OH	0.90	2.00	0	0	0	0	0	-	-	-	-	-	-
36	13,604	C5-OH	1.00	2.00	0	1	0	1	0	-	0.007%	-	0.007%	-	0.00%
37	8,416	C5-OH	1.00	2.00	0	0	0	0	0	-	-	-	-	-	-
38	5,499	C5-OH	1.00	1.50	0	0	0	0	0	-	-	-	-	-	-
全体	870,739	C5-OH	0.99	1.98	67	9	52	61	5	0.008%	0.001%	0.006%	0.007%	1:174,148	8.20%
									max	0.030%	0.009%	0.019%	0.028%		50.00%
									min	0.002%	0.002%	0.004%	0.002%		0.00%



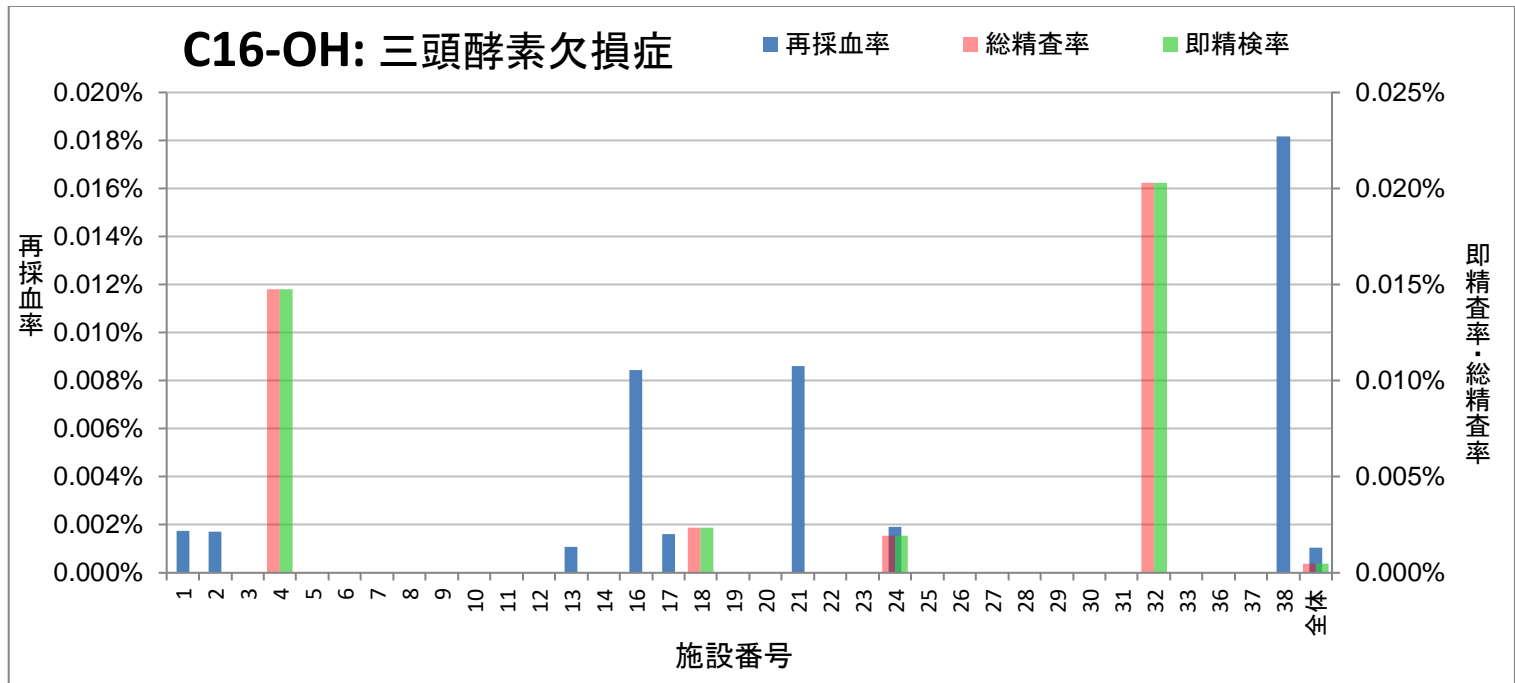
施設No	検体数	項目	カットオフ値		再採血数	即精査数	再採血後精査数	総精査数	発見患者	再採血率	即精査率	再採血後精査率	総精査率	発見頻度	陽性適中率 (PPV)
			初回検査	即精査											
1	57,136	C5-DC	0.30		21	0	3	3	0	0.037%	-	0.005%	0.005%	-	0.00%
2	58,806	C5-DC	0.30		25	0	1	1	0	0.043%	-	0.002%	0.002%	-	0.00%
3	20,761	C5-DC	0.35		17	0	0	0	0	0.082%	-	-	-	-	0.00%
4	6,773	C5-DC	0.31		1	1	0	1	0	0.015%	0.015%	-	0.015%	-	0.00%
5	17,355	C5-DC	0.35		5	0	0	0	0	0.029%	-	-	-	-	0.00%
6	9,830	C5-DC	0.23		1	0	0	0	0	0.010%	-	-	-	-	0.00%
7	13,349	C5-DC	0.25		4	0	0	0	0	0.030%	-	-	-	-	0.00%
8	15,155	C5-DC	0.30		1	0	0	0	0	0.007%	-	-	-	-	0.00%
9	14,864	C5-DC	0.35	0.50	4	0	0	0	0	0.027%	-	-	-	-	0.00%
10	14,971	C5-DC	0.25		1	0	0	0	0	0.007%	-	-	-	-	0.00%
11	31,669	C5-DC	0.25		5	0	1	1	0	0.016%	-	0.003%	0.003%	-	0.00%
12	12,839	C5-DC	0.25					0		-	-	-	-	-	0.00%
13	93,480	C5-DC	0.25	0.70	4	0	1	1	0	0.004%	-	0.001%	0.001%	-	0.00%
14	41,417	C5-DC	0.35		4	0	0	0	0	0.010%	-	-	-	-	0.00%
16	23,703	C5-DC	0.27		14	0	1	1	1	0.059%	-	0.004%	0.004%	1 : 23,703	100.00%
17	62,545	C5-DC	0.25		30	0	0	0	0	0.048%	-	-	-	-	0.00%
18	42,801	C5-DC	0.30		20	1	0	1	0	0.047%	0.002%	-	0.002%	-	0.00%
19	40,476	C5-DC	0.25		38	0	0	0	0	0.094%	-	-	-	-	0.00%
20	13,258	C5-DC	0.30		0	0	0	0	0	-	-	-	-	-	0.00%
21	11,598	C5-DC	0.30		0	0	0	0	0	-	-	-	-	-	0.00%
22	7,044	C5-DC	0.29					0		-	-	-	-	-	0.00%
23	14,986	C5-DC	0.25		1	0	0	0	0	0.007%	-	-	-	-	0.00%
24	52,111	C5-DC	0.25		32	1	1	2	0	0.061%	0.002%	0.002%	0.004%	-	0.00%
25	7,165	C5-DC	0.35		0	0	0	0	0	-	-	-	-	-	0.00%
26	50,628	C5-DC	0.29		12	0	4	4	0	0.024%	-	0.008%	0.008%	-	0.00%
27	9,301	C5-DC	0.20		4	0	0	0	0	0.043%	-	-	-	-	0.00%
28	19,023	C5-DC	0.20		16	0	0	0	0	0.084%	-	-	-	-	0.00%
29	24,894	C5-DC	0.25		8	0	0	0	0	0.032%	-	-	-	-	0.00%
30	10,548	C5-DC	0.30		0	0	0	0	0	-	-	-	-	-	0.00%
31	26,824	C5-DC	0.25		3	0	1	1	0	0.011%	-	0.004%	0.004%	-	0.00%
32	4,925	C5-DC	0.25		0	0	0	0	0	-	-	-	-	-	0.00%
33	12,985	C5-DC	0.35		10	0	0	0	0	0.077%	-	-	-	-	0.00%
36	13,604	C5-DC	0.25		2	0	0	0	0	0.015%	-	-	-	-	0.00%
37	8,416	C5-DC	0.20		7	0	0	0	0	0.083%	-	-	-	-	0.00%
38	5,499	C5-DC	0.35					0	0	-	-	-	-	-	0.00%
全体	870,739	C5-DC	0.28	0.60	290	3	13	16	1	0.033%	0.000%	0.001%	0.002%	1 : 870,739	6.25%
										max	0.094%	0.015%	0.008%	0.015%	100.00%
										min	0.004%	0.002%	0.001%	0.001%	0.00%



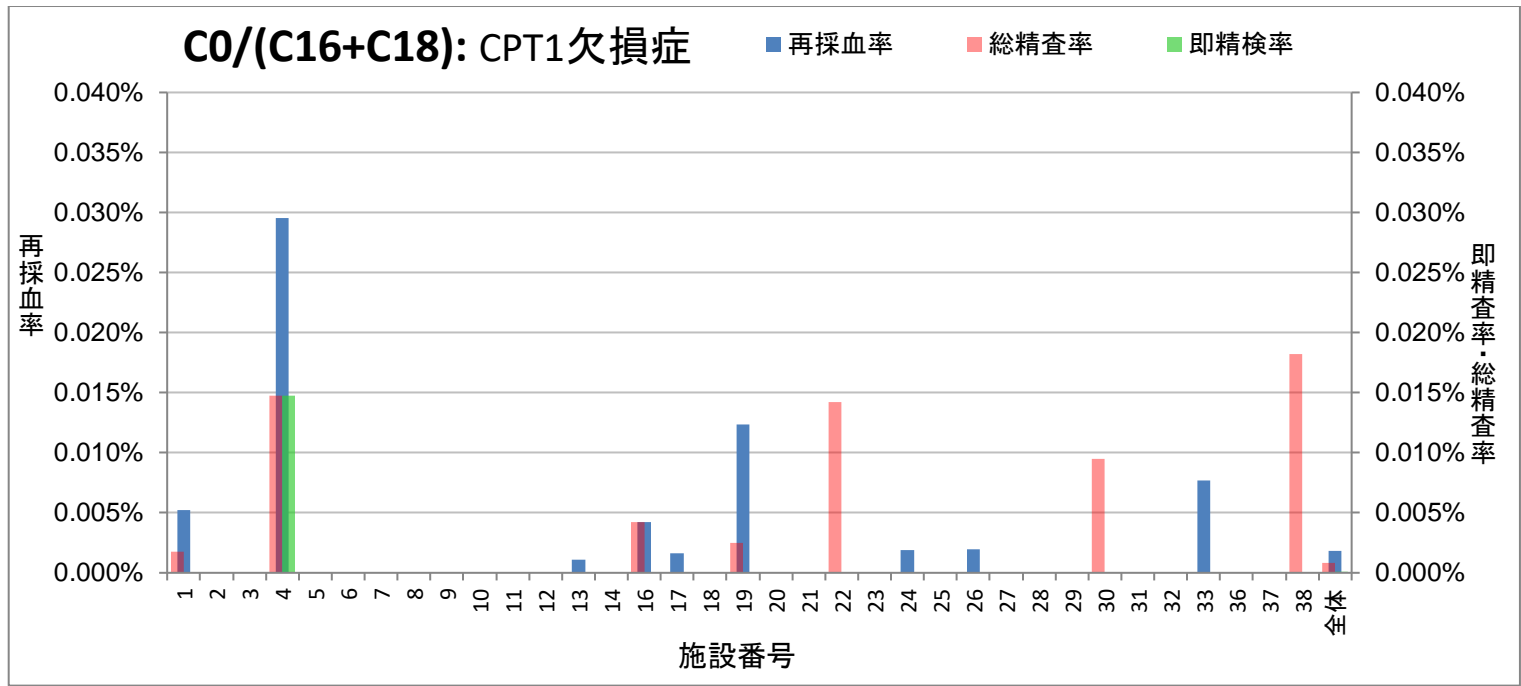
施設No	検体数	項目	カットオフ値		再採血数	即精査数	再採血後精査数	総精査数	発見患者	再採血率	即精査率	再採血後精査率	総精査率	発見頻度	陽性適中率 (PPV)
			初回検査	即精査											
1	57,136	C8	0.30	0.50	0	0	1	1	0	-	-	0.002%	0.002%	-	0.00%
2	58,806	C8	0.30	0.60	0	0	0	0	0	-	-	-	-	-	-
3	20,761	C8	0.30	0.30	0	0	0	0	0	-	-	-	-	-	-
4	6,773	C8	0.28	0.74	1	0	0	0	0	0.015%	-	-	-	-	-
5	17,355	C8	0.30	0.60	2	2	0	2	0	0.012%	0.012%	-	0.012%	-	0.00%
6	9,830	C8		&0.23	0	0	0	0	0	-	-	-	-	-	-
7	13,349	C8	0.30	0.80	0	0	0	0	0	-	-	-	-	-	-
8	15,155	C8	0.30	0.60						-	-	-	-	-	-
9	14,864	C8	0.30	0.50						-	-	-	-	-	-
10	14,971	C8	0.30	0.60						-	-	-	-	-	-
11	31,669	C8		0.30	0	3	0	3	0	-	0.009%	-	0.009%	-	0.00%
12	12,839	C8		0.30		1		1	1	-	0.008%	-	0.008%	1 : 12,839	100.00%
13	93,480	C8	0.30	0.60	1	0	1	1	1	0.001%	-	0.001%	0.001%	1 : 93,480	100.00%
14	41,417	C8	0.30	0.30	0	1	0	1		-	0.002%	-	0.002%	-	0.00%
16	23,703	C8	0.30	0.50	0	0	0	0	0	-	-	-	-	-	-
17	62,545	C8	0.30	0.60	2					0.003%	-	-	-	-	-
18	42,801	C8		0.30	0	2	0	2	1	-	0.005%	-	0.005%	1 : 42,801	50.00%
19	40,476	C8	0.30	0.50	7	2		2	1	0.017%	0.005%	-	0.005%	1 : 40,476	50.00%
20	13,258	C8	0.30		0	0	0	0	0	-	-	-	-	-	-
21	11,598	C8	0.27	0.50	0	0	1	1		-	-	0.009%	0.009%	-	0.00%
22	7,044	C8	0.30	0.50						-	-	-	-	-	-
23	14,986	C8	0.30	0.60	2	0	0	0	0	0.013%	-	-	-	-	-
24	52,111	C8		0.30	0	1	0	1		-	0.002%	-	0.002%	-	0.00%
25	7,165	C8	0.28	0.28	0	0	0	0	0	-	-	-	-	-	-
26	50,628	C8	0.30	0.30	1		1	1		0.002%	-	0.002%	0.002%	-	0.00%
27	9,301	C8	0.23							-	-	-	-	-	-
28	19,023	C8	0.30		3	0	0	0	0	0.016%	-	-	-	-	-
29	24,894	C8	0.30	0.30						-	-	-	-	-	-
30	10,548	C8	0.27	0.50	0	0	0	0		-	-	-	-	-	-
31	26,824	C8	0.30	0.30	2	2	0	2	1	0.007%	0.007%	-	0.007%	1 : 26,824	50.00%
32	4,925	C8	0.30	0.60	2	0	0	0	0	0.041%	-	-	-	-	-
33	12,985	C8	0.25	0.60						-	-	-	-	-	-
36	13,604	C8		0.30	0	0	0	0	0	-	-	-	-	-	-
37	8,416	C8	0.30	0.30	0	1	0	1	1	-	0.012%	-	0.012%	1 : 8,416	100.00%
38	5,499	C8	0.30	0.60						-	-	-	-	-	-
全体	870,739	C8	0.29	0.47	23	15	4	19	6	0.003%	0.002%	0.000%	0.002%	1 : 145,123	31.58%
										max	0.041%	0.012%	0.009%	0.012%	100.00%
										min	0.001%	0.002%	0.001%	0.001%	0.00%



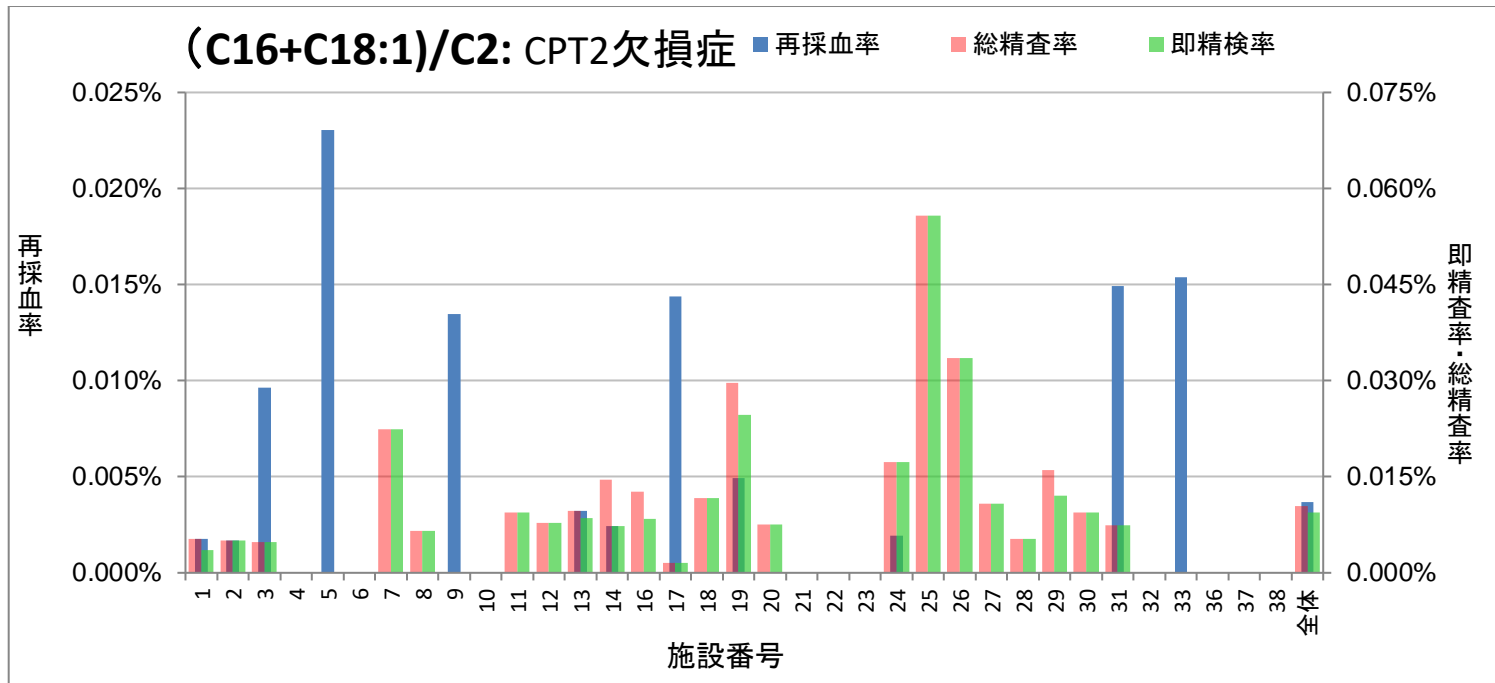
施設No	検体数	項目	カットオフ値		再採血数	即精検数	再採血後精検数	総精検数	発見患者	再採血率	即精検率	再採血後精検率	総精査率	発見頻度	陽性適中率 (PPV)
			初回検査	即精査											
1	57,136	C14:1	0.35	1.00	15	2	0	2	0	0.026%	0.004%	-	0.004%	-	0.00%
2	58,806	C14:1	0.27	1.00	31	0	0	0	0	0.053%	-	-	-	-	-
3	20,761	C14:1	0.30	0.30	0	7	0	7	0	-	0.034%	-	0.034%	-	0.00%
4	6,773	C14:1	0.25	0.25	0	0	0	0	0	-	-	-	-	-	-
5	17,355	C14:1	0.40		7	2	0	2	0	0.040%	0.012%	-	0.012%	-	0.00%
6	9,830	C14:1		&0.28	0	1	0	1	0	-	0.010%	-	0.010%	-	0.00%
7	13,349	C14:1		0.30	0	2	0	2	0	-	0.015%	-	0.015%	-	0.00%
8	15,155	C14:1	0.40					0	0	-	-	-	-	-	-
9	14,864	C14:1	0.40	1.00	3	0	0	0	0	0.020%	-	-	-	-	-
10	14,971	C14:1	0.30	1.00	0	0	0	0	0	-	-	-	-	-	-
11	31,669	C14:1	0.40	1.00	2	0	0	0	0	0.006%	-	-	-	-	-
12	12,839	C14:1		0.40		1		1		-	0.008%	-	0.008%	-	0.00%
13	93,480	C14:1	0.40	0.40	9	4	4	8	5	0.010%	0.004%	0.004%	0.009%	1:18,696	62.50%
14	41,417	C14:1	0.40	0.40	1	3	0	3	1	0.002%	0.007%	-	0.007%	1:41,417	33.33%
16	23,703	C14:1	0.30	0.40	0	2	0	2	1	-	0.008%	-	0.008%	1:23,703	50.00%
17	62,545	C14:1	0.40	1.00	14	3		3		0.022%	0.005%	-	0.005%	-	0.00%
18	42,801	C14:1		0.40	0	2	0	2	0	-	0.005%	-	0.005%	-	0.00%
19	40,476	C14:1	0.40	1.00	4			0		0.010%	-	-	-	-	-
20	13,258	C14:1	0.40		0	0	0	0	0	-	-	-	-	-	-
21	11,598	C14:1	0.27	1.00	6	2	0	2		0.052%	0.017%	-	0.017%	-	0.00%
22	7,044	C14:1	0.27	1.00	1	1		1	0	0.014%	0.014%	-	0.014%	-	0.00%
23	14,986	C14:1	0.30	1.00	9	0	1	1	1	0.060%	-	0.007%	0.007%	1:14,986	100.00%
24	52,111	C14:1		0.40	0	2	0	2		-	0.004%	-	0.004%	-	0.00%
25	7,165	C14:1	0.30	0.30	2	1	0	1	0	0.028%	0.014%	-	0.014%	-	0.00%
26	50,628	C14:1	0.40	0.40	0	4		4	3	-	0.008%	-	0.008%	1:16,876	75.00%
27	9,301	C14:1	0.27					0		-	-	-	-	-	-
28	19,023	C14:1	0.35		3	0	0	0	0	0.016%	-	-	-	-	-
29	24,894	C14:1	0.40	0.40		4		4	1	-	0.016%	-	0.016%	1:24,894	25.00%
30	10,548	C14:1	0.30	1.00	5	0	0	0		0.047%	-	-	-	-	-
31	26,824	C14:1	0.30	0.30	8	6	0	6	0	0.030%	0.022%	-	0.022%	-	0.00%
32	4,925	C14:1	0.26	1.00	0	11	0	11	0	-	0.223%	-	0.223%	-	0.00%
33	12,985	C14:1	0.30	0.80	3		1	1	1	0.023%	-	0.008%	0.008%	1:12,985	100.00%
36	13,604	C14:1		0.40	0	0	0	0	0	-	-	-	-	-	-
37	8,416	C14:1	0.25	0.25	0	2	0	2	0	-	0.024%	-	0.024%	-	0.00%
38	5,499	C14:1	0.35	1.00	1	2		2	0	0.018%	0.036%	-	0.036%	-	0.00%
全体	870,739	C14:1	0.33	0.66	124	64	6	70	13	0.014%	0.007%	0.001%	0.008%	1:66,980	18.57%
									max	0.060%	0.223%	0.008%	0.223%		100.00%
									min	0.002%	0.004%	0.004%	0.004%		0.00%



施設 No	検体数	項目	カットオフ値		再採血数	即精査数	再採血後精査数	総精査数	発見患者	再採血率	即精査率	再採血後精査率	総精査率	発見頻度	陽性適中率 (PPV)
			初回検査	即精査											
1	57,136	C16-OH	0.05		1	0	0	0	0	0.002%	-	-	-	-	-
2	58,806	C16-OH	0.05		1	0	0	0	0	0.002%	-	-	-	-	-
3	20,761	C16-OH	0.05	0.05	0	0	0	0	0	-	-	-	-	-	-
4	6,773	C16-OH	0.08	0.08	0	1	0	1	0	-	0.015%	-	0.015%	-	0.00%
5	17,355	C16-OH	0.10		0	0	0	0	0	-	-	-	-	-	-
6	9,830	C16-OH		0.05	0	0	0	0	0	-	-	-	-	-	-
7	13,349	C16-OH	0.10		0	0	0	0	0	-	-	-	-	-	-
8	15,155	C16-OH	0.05		0	0	0	0	0	-	-	-	-	-	-
9	14,864	C16-OH	0.10		0	0	0	0	0	-	-	-	-	-	-
10	14,971	C16-OH	0.08		0	0	0	0	0	-	-	-	-	-	-
11	31,669	C16-OH		0.10	0	0	0	0	0	-	-	-	-	-	-
12	12,839	C16-OH		0.10	0	0	0	0	0	-	-	-	-	-	-
13	93,480	C16-OH	0.05		1	0	0	0	0	0.001%	-	-	-	-	-
14	41,417	C16-OH	0.10	0.10	0	0	0	0	0	-	-	-	-	-	-
16	23,703	C16-OH	0.05		2	0	0	0	0	0.008%	-	-	-	-	-
17	62,545	C16-OH	0.05		1	0	0	0	0	0.002%	-	-	-	-	-
18	42,801	C16-OH		0.04	0	1	0	1	0	-	0.002%	-	0.002%	-	0.00%
19	40,476	C16-OH	0.05		0	0	0	0	0	-	-	-	-	-	-
20	13,258	C16-OH	0.05		0	0	0	0	0	-	-	-	-	-	-
21	11,598	C16-OH	0.05		1	0	0	0	0	0.009%	-	-	-	-	-
22	7,044	C16-OH	0.05		0	0	0	0	0	-	-	-	-	-	-
23	14,986	C16-OH	0.08		0	0	0	0	0	-	-	-	-	-	-
24	52,111	C16-OH		0.04	1	1	0	1	0	0.002%	0.002%	-	0.002%	-	0.00%
25	7,165	C16-OH	0.10	0.10	0	0	0	0	0	-	-	-	-	-	-
26	50,628	C16-OH	0.05	0.05	0	0	0	0	0	-	-	-	-	-	-
27	9,301	C16-OH	0.045		0	0	0	0	0	-	-	-	-	-	-
28	19,023	C16-OH	0.10		0	0	0	0	0	-	-	-	-	-	-
29	24,894	C16-OH	0.10	0.10	0	0	0	0	0	-	-	-	-	-	-
30	10,548	C16-OH	0.05		0	0	0	0	0	-	-	-	-	-	-
31	26,824	C16-OH	0.07	0.07	0	0	0	0	0	-	-	-	-	-	-
32	4,925	C16-OH	0.08		0	1	0	1	0	-	0.020%	-	0.020%	-	0.00%
33	12,985	C16-OH	0.05		0	0	0	0	0	-	-	-	-	-	-
36	13,604	C16-OH		0.10	0	0	0	0	0	-	-	-	-	-	-
37	8,416	C16-OH	0.08		0	0	0	0	0	-	-	-	-	-	-
38	5,499	C16-OH	0.08		1	0	0	0	0	0.018%	-	-	-	-	-
全体	870,739	C16-OH	0.07	0.08	9	4	0	4	0	0.001%	0.000%	-	0.000%	-	0.00%
									max	0.018%	0.020%	0.000%	0.020%		0.00%
									min	0.001%	0.002%	0.000%	0.002%		0.00%



施設 No	検体数	項目	カットオフ値		再採血数	即精査数	再採血後精査数	総精査数	発見患者	再採血率	即精査率	再採血後精査率	総精査率	発見頻度	陽性適中率 (PPV)
			初回検査	即精査											
1	57,136	C0/(C16+C18)	90.00		3	0	1	1	1	0.005%	-	0.002%	0.002%	1:57,136	100.00%
2	58,806	C0/(C16+C18)	100.00		0	0	0	0	0	-	-	-	-	-	-
3	20,761	C0/(C16+C18)	80.00		0	0	0	0	0	-	-	-	-	-	-
4	6,773	C0/(C16+C18)	96.00		2	1	0	1	0	0.030%	0.015%	-	0.015%	-	0.00%
5	17,355	C0/(C16+C18)	100.00		0	0	0	0	0	-	-	-	-	-	-
6	9,830	C0/(C16+C18)	80.00		0	0	0	0	0	-	-	-	-	-	-
7	13,349	C0/(C16+C18)	100.00		0	0	0	0	0	-	-	-	-	-	-
8	15,155	C0/(C16+C18)	100.00		0	0	0	0	0	-	-	-	-	-	-
9	14,864	C0/(C16+C18)	100.00		0	0	0	0	0	-	-	-	-	-	-
10	14,971	C0/(C16+C18)	40.00		0	0	0	0	0	-	-	-	-	-	-
11	31,669	C0/(C16+C18)		100.00	0	0	0	0	0	-	-	-	-	-	-
12	12,839	C0/(C16+C18)		100.00				0		-	-	-	-	-	-
13	93,480	C0/(C16+C18)	100.00		1	0	0	0	0	0.001%	-	-	-	-	-
14	41,417	C0/(C16+C18)	100.00	100.00	0	0	0	0	0	-	-	-	-	-	-
16	23,703	C0/(C16+C18)	80.00		1	0	1	1	0	0.004%	-	0.004%	0.004%	-	0.00%
17	62,545	C0/(C16+C18)	100.00		1			0	0	0.002%	-	-	-	-	-
18	42,801	C0/(C16+C18)		100.00	0	0	0	0	0	-	-	-	-	-	-
19	40,476	C0/(C16+C18)	70.00		5		1	1	0	0.012%	-	0.002%	0.002%	-	0.00%
20	13,258	C0/(C16+C18)	100.00		0	0	0	0	0	-	-	-	-	-	-
21	11,598	C0/(C16+C18)	50.00		0	0	0	0	0	-	-	-	-	-	-
22	7,044	C0/(C16+C18)	60.00				1	1	0	-	-	0.014%	0.014%	-	0.00%
23	14,986	C0/(C16+C18)	100.00		0	0	0	0	0	-	-	-	-	-	-
24	52,111	C0/(C16+C18)		100.00	1	0	0	0	0	0.002%	-	-	-	-	-
25	7,165	C0/(C16+C18)	75.00	75.00	0	0	0	0	0	-	-	-	-	-	-
26	50,628	C0/(C16+C18)	60.00		1			0	0	0.002%	-	-	-	-	-
27	9,301	C0/(C16+C18)	80.00					0	0	-	-	-	-	-	-
28	19,023	C0/(C16+C18)	100.00		0	0	0	0	0	-	-	-	-	-	-
29	24,894	C0/(C16+C18)	100.00	100.00				0	0	-	-	-	-	-	-
30	10,548	C0/(C16+C18)	60.00		0	0	1	1		-	-	0.009%	0.009%	-	0.00%
31	26,824	C0/(C16+C18)	50.00		0	0	0	0	0	-	-	-	-	-	-
32	4,925	C0/(C16+C18)	40.00		0	0	0	0	0	-	-	-	-	-	-
33	12,985	C0/(C16+C18)	80.00		1			0	0	0.008%	-	-	-	-	-
36	13,604	C0/(C16+C18)		100.00	0	0	0	0	0	-	-	-	-	-	-
37	8,416	C0/(C16+C18)	40.00		0	0	0	0	0	-	-	-	-	-	-
38	5,499	C0/(C16+C18)	100.00				1	1	0	-	-	0.018%	0.018%	-	0.00%
全体	870,739	C0/(C16+C18)	81.03	96.88	16	1	6	7	1	0.002%	0.000%	0.001%	0.001%	1:870,739	14.29%
										max					100.00%
										0.030%	0.015%	0.018%	0.018%		
										min					0.00%
										0.001%	0.015%	0.002%	0.002%		



施設No	検体数	項目	カットオフ値		再採血数	即精検数	再採血後精検数	総精検数	発見患者	再採血率	即精検率	再採血後精検率	総精査率	発見頻度	陽性適中率 (PPV)
			初回検査	即精査											
1	57,136	(C16+C18:1)/C2		0.34	1	2	1	3	0	0.002%	0.004%	0.002%	0.005%	-	0.00%
2	58,806	(C16+C18:1)/C2	0.65	0.65	1	3	0	3	0	0.002%	0.005%	-	0.005%	-	0.00%
3	20,761	(C16+C18:1)/C2	0.38	0.38	2	1	0	1	0	0.010%	0.005%	-	0.005%	-	0.00%
4	6,773	(C16+C18:1)/C2	0.37	0.37	0	0	0	0	0	-	-	-	-	-	-
5	17,355	(C16+C18:1)/C2	0.45		4	0	0	0	0	0.023%	-	-	-	-	-
6	9,830	(C16+C18:1)/C2		&0.39	0	0	0	0	0	-	-	-	-	-	-
7	13,349	(C16+C18:1)/C2		0.40	0	3	0	3	0	-	0.022%	-	0.022%	-	0.00%
8	15,155	(C16+C18:1)/C2	0.40			1		1	0	-	0.007%	-	0.007%	-	0.00%
9	14,864	(C16+C18:1)/C2	0.40		2	0	0	0	0	0.013%	-	-	-	-	-
10	14,971	(C16+C18:1)/C2	0.42		0	0	0	0	0	-	-	-	-	-	-
11	31,669	(C16+C18:1)/C2		0.40	0	3	0	3	1	-	0.009%	-	0.009%	1 : 31,669	33.33%
12	12,839	(C16+C18:1)/C2		0.35		1		1		-	0.008%	-	0.008%	-	0.00%
13	93,480	(C16+C18:1)/C2	0.40		3	8	1	9	0	0.003%	0.009%	0.001%	0.010%	-	0.00%
14	41,417	(C16+C18:1)/C2	0.37	0.37	1	3	3	6	0	0.002%	0.007%	0.007%	0.014%	-	0.00%
16	23,703	(C16+C18:1)/C2		0.40	0	2	1	3	0	-	0.008%	0.004%	0.013%	-	0.00%
17	62,545	(C16+C18:1)/C2	0.36		9	1		1	0	0.014%	0.002%	-	0.002%	-	0.00%
18	42,801	(C16+C18:1)/C2		0.40	0	5	0	5	1	-	0.012%	-	0.012%	1 : 42,801	20.00%
19	40,476	(C16+C18:1)/C2		0.41	2	10	2	12	1	0.005%	0.025%	0.005%	0.030%	1 : 40,476	8.33%
20	13,258	(C16+C18:1)/C2	0.50		0	1	0	1	0	-	0.008%	-	0.008%	-	0.00%
21	11,598	(C16+C18:1)/C2	0.40		0	0	0	0	0	-	-	-	-	-	-
22	7,044	(C16+C18:1)/C2	0.36					0	0	-	-	-	-	-	-
23	14,986	(C16+C18:1)/C2	0.57		0	0	0	0	0	-	-	-	-	-	-
24	52,111	(C16+C18:1)/C2		0.50	1	9	0	9	0	0.002%	0.017%	-	0.017%	-	0.00%
25	7,165	(C16+C18:1)/C2	0.37	0.37	0	4	0	4	0	-	0.056%	-	0.056%	-	0.00%
26	50,628	(C16+C18:1)/C2	0.43	0.43	0	17		17	1	-	0.034%	-	0.034%	1 : 50,628	5.88%
27	9,301	(C16+C18:1)/C2	0.60			1		1		-	0.011%	-	0.011%	-	0.00%
28	19,023	(C16+C18:1)/C2	0.45		0	1	0	1	1	-	0.005%	-	0.005%	1 : 19,023	100.00%
29	24,894	(C16+C18:1)/C2	0.32	0.32		3	1	4		-	0.012%	0.004%	0.016%	-	0.00%
30	10,548	(C16+C18:1)/C2		0.42	0	1	0	1		-	0.009%	-	0.009%	-	0.00%
31	26,824	(C16+C18:1)/C2	0.44	0.44	4	2	0	2	0	0.015%	0.007%	-	0.007%	-	0.00%
32	4,925	(C16+C18:1)/C2	0.42		0	0	0	0	0	-	-	-	-	-	-
33	12,985	(C16+C18:1)/C2	0.438	両指標基準値超えたもの	2			0		0.015%	-	-	-	-	-
36	13,604	(C16+C18:1)/C2		0.54	0	0	0	0	0	-	-	-	-	-	-
37	8,416	(C16+C18:1)/C2	0.50	0.50	0	0	0	0	0	-	-	-	-	-	-
38	5,499	(C16+C18:1)/C2	0.40		0	0	0	0	0	-	-	-	-	-	-
全体	870,739	(C16+C18:1)/C2	0.43	0.42	32	82	9	91	5	0.004%	0.009%	0.001%	0.010%	1 : 174,148	5.49%
									max	0.023%	0.056%	0.007%	0.056%		100.00%
									min	0.002%	0.002%	0.001%	0.002%		0.00%